



# The KwikTag Appliance

## Innovative, Pre-Configured Delivery and Automatic Updates for Low TCO

KwikTag is as easy to deploy as it is to use. The KwikTag Appliance provides accelerated value because it is delivered as a complete, pre-installed virtual system, on a thumb drive, or pre-staged on server hardware purchased from ImageTag. This pre-configured delivery provides a productive and secure way to achieve a fast return and long-term value on your KwikTag transactional content management investment.

Based on Microsoft technologies, this turnkey solution includes the components of the KwikTag system bundled as a virtual image with or without hardware to simplify the acquisition, installation, deployment and maintenance process. The KwikTag Appliance, either physical or virtual, takes less time as Windows Server, SQL, IIS and security are either pre-configured or staged—requiring only an hour to get the base platform up and running, compared to at least a day for other solutions.

### Accelerated Value

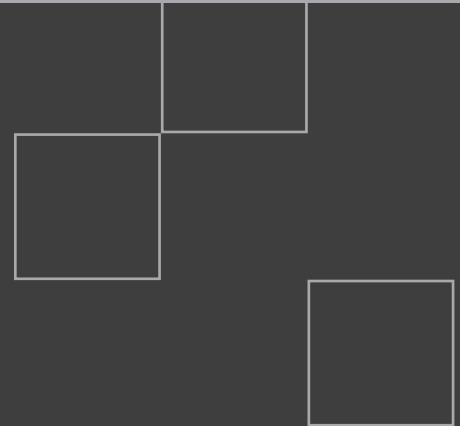
- Simplified deployment from pre-staged, turnkey solution
- Plug-and-Play technology is ready for immediate use
- Physical Appliance hardware doubles as a storage server

### Secure, Scalable and Supported

- Securely behind the firewall and off the domain
- Easy to back-up and optimized for disaster recovery
- Benefits of automatic upgrades with on-premise data security
- Growth flexibility from off-Appliance storage
- Supported over the Internet with automatic repair/recovery from defects and with a single replacement warranty

### Continued Value and Low Total Cost of Ownership

- Single source of support for software, hardware and operating system (if hardware is purchased from ImageTag)
- Automated updates without need for additional services, manual upgrade costs, or visits to users
- Easy fit into your existing environment and routines



## Specifications/Minimum Requirements

### Tier 1 Physical Appliance

- Latest Intel Architecture (“nahalem”)
- Quad-core, 2.4 GHz, 12GB RAM, 1U rack mount
- Microsoft Windows Server 2008 R2 and SQL Server 2008 R2 SPI Express Edition
- Two 2TB mirrored drives, RAID 1
- Up to 2TB on-appliance storage

### Tier 2 Physical Appliance

- Latest Intel Architecture (“nahalem”)
- Quad-core, 2.4 GHz, 16GB RAM, 1U rack mount
- Microsoft Windows Server 2008 R2 and SQL Server 2008 R2 SPI Express Edition
- Dual power supplies
- Three 2TB drives, RAID 5
- Up to 4TB on-appliance storage

### Virtual Appliance

- Customer provides hardware and virtual environment
- Windows Server 2008 R2 license key is required
- Supports 2 virtual platforms:
  - VMWare Server ESX 4.x or newer
  - Microsoft Hyper-V on Server 2008 R2
- 8GB RAM minimum; 175GB storage minimum, without documents
- 4 logical processors

### WorkStation Resolution

- 1920x1080 recommended; 1280x960 minimum

## Facts and Features

The KwikTag Appliance contains all of the software (and hardware and operating system in the case of the physical appliance options) required for the KwikTag System. Both the meta-data and document repository are stored on the Appliance, though the repository can be configured to leverage off-Appliance storage of scanned or electronic documents. The Appliance also supports external network attached storage (NAS) systems.

All interaction to and from the Appliance occurs over standard and open Internet protocols that can be monitored and traced using any standard security infrastructure. The Appliance includes virus protection software that is also updated via the Internet, or use any common applications. The physical Appliances are 1U rack mount servers with user-replaceable parts such as power supply and hard disks. Although embedded in the Dynamics clients, KwikTag's architecture does not require access to the Dynamics database to function.

The KwikTag Appliance realizes continued value because upgrades, patches and product updates are conveyed over the Internet via a secure subscription service, saving time and money relative to patch management and manual upgrade costs. You'll enjoy the easy and immediate update benefit of software-as-a-service (SaaS) with the security and ownership of on-premise software.

The Appliance can be set up for development, testing and production environments, disaster recovery and High Availability configurations. You can use your current virtual backup solution, deploy a compatible backup agent, or the Appliance is configured with a protected share allowing access for standard backup software to sweep SQL backups and the document repository.

## Assistance and Support

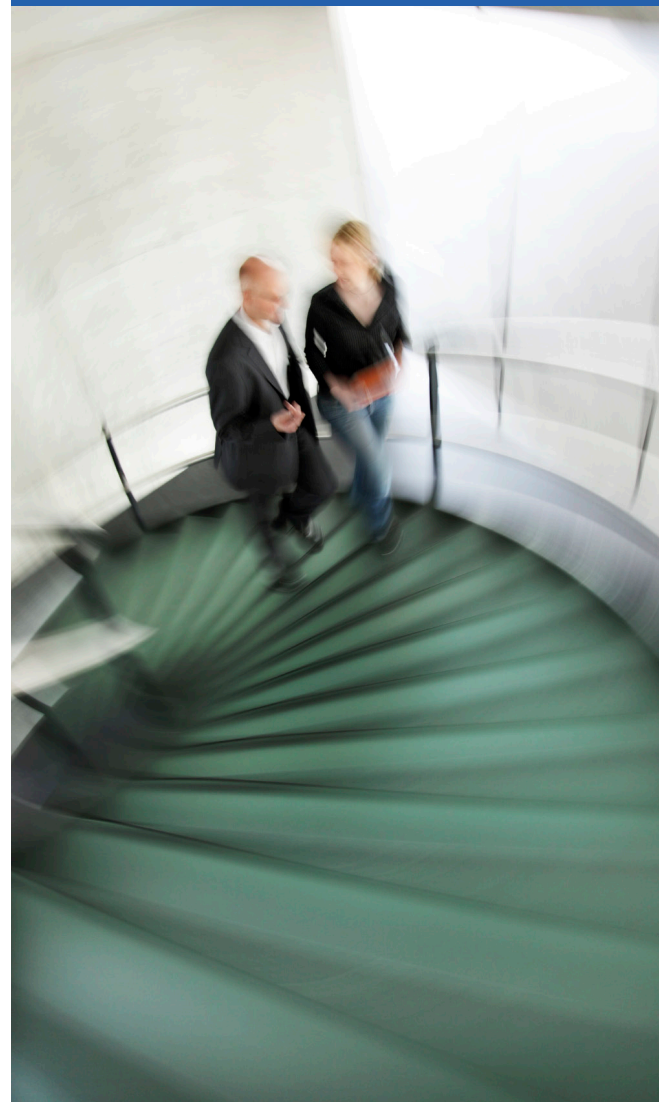
ImageTag is with you the whole way supporting the reliability and availability of the whole system. ImageTag provides an overnight replacement hardware warranty and the necessary assistance for all software and hardware for as long as the KwikTag Support Agreement and hardware warranties are current. This innovative delivery model is available in a variety of specifications to match your solution requirements, sizing and volume, and desire for provided hardware or a plug-in virtual environment.

**We'll work with you to deploy the KwikTag System for your scalability, storage, access and business continuity needs. KwikTag supports complex, enterprise-level deployments while remaining easy and compatible with existing environments for smaller companies with more limited resources.**

**Contact your KwikTag Reseller or ImageTag for more information or to get started with KwikTag!**

**“With KwikTag, we are now able to store our A/P and A/R documentation directly from our Dynamics system. We are saving a tremendous amount of time, money and resources.”**

- Bill Blyth, CIO, Oldcastle Precast



ImageTag, Inc.

1400 E Southern Avenue, Suite 800  
Tempe, AZ 85282

tel. 480.753.9300

fax. 480.753.9400

**1.888.KWIKTAG | [sales@kwiktag.com](mailto:sales@kwiktag.com)**

Copyright © ImageTag, Inc. All rights reserved. KwikTag, the KwikTag logo, ImageTag, and the ImageTag logo are registered trademarks of ImageTag, Inc. Microsoft Windows Server and SQL Server Express are registered trademarks of Microsoft Corporation.